

Expanding Opportunities for Early Learning in K-12 Settings

Pat Sublette

Special Ed Director, Douglas ESD

Jan Zarate

Superintendent/Principal, Yoncalla School District

Heather Murphy

Yoncalla Early Works Site Liaison & Rural Policy Advisor

Children's Institute

with thanks to Dr. Marina Merrill

Senior Research & Policy Advisor



Why Early Works?



Starting out

- We wanted to do something for young children
- Involve the community and school
- Listen to the community



The YEW Partnership



- Yoncalla Early Works partners
- Ford Family Foundation
- Children's Institute
Early Works
- A statewide connection

Why is early learning important?

- <http://www.childinst.org/publications/video>

Early Works in Yoncalla



Early Strategies

- Family Engagement
- Early Literacy

Activities



- The Family Room
- Parent Education
- Home Visiting
- Reading
- Social Activities

Some Community Partners

Breastfeeding Coalition of Douglas County

Childcare Providers of Yoncalla

Douglas County Early Childhood Planning Coalition

Douglas Education Service District

Family Connections of Lane and Douglas Counties

Family Development Center/Healthy Families Oregon

Family Relief Nursery

Ford Institute Leadership Program, North Douglas Cohort

Parents of Yoncalla

Public Health Department/Nurse Family Partnership

UCAN Head Start/Early Head Start

United Communities AmeriCorps

Yoncalla Public Library

Yoncalla Preschool

Next Steps



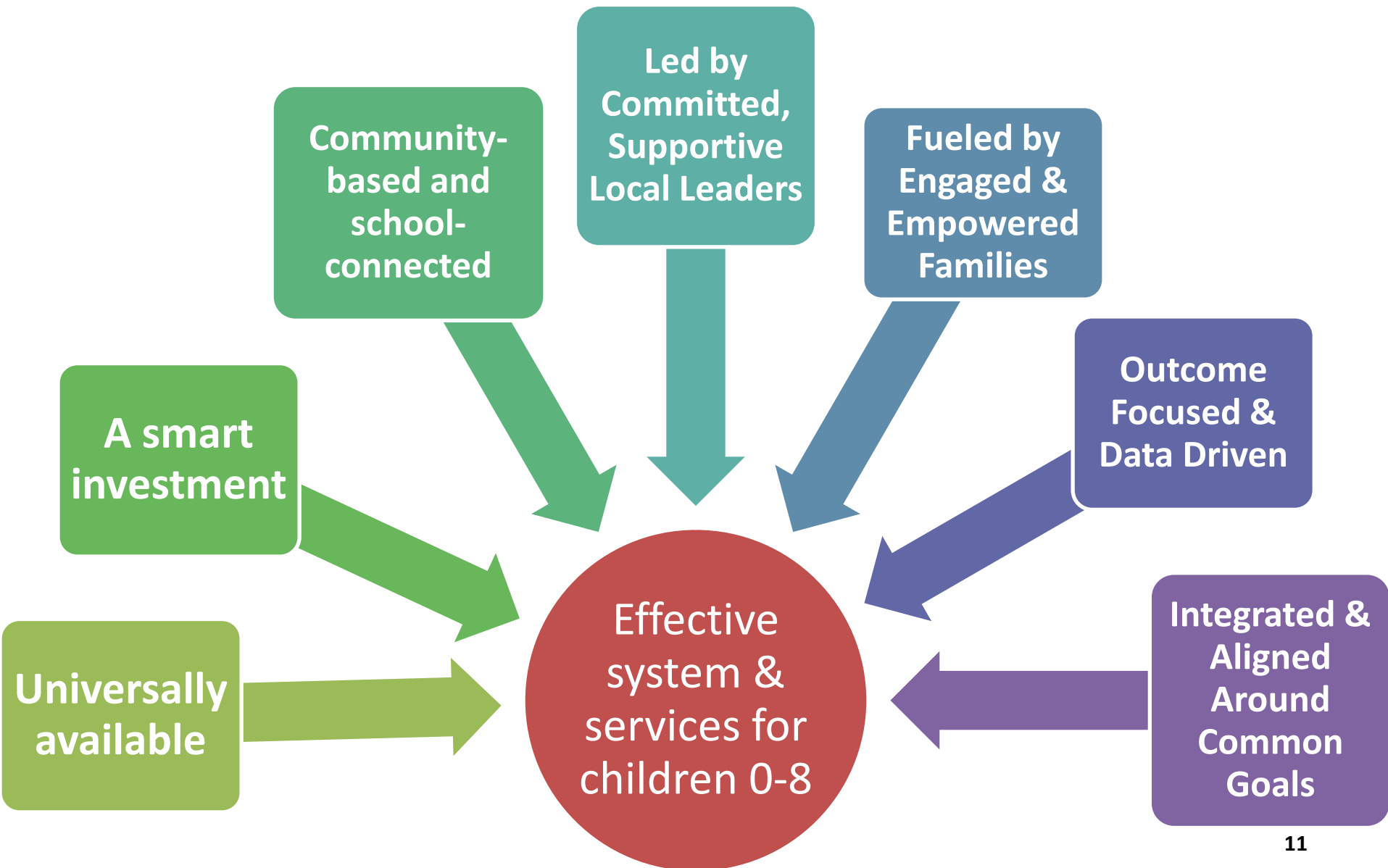
- Early Kindergarten Transition Program
- Summer Reading and Math Activities
- Addressing Chronic Absence
- Community Health Assessment

Here is what we want for YEW

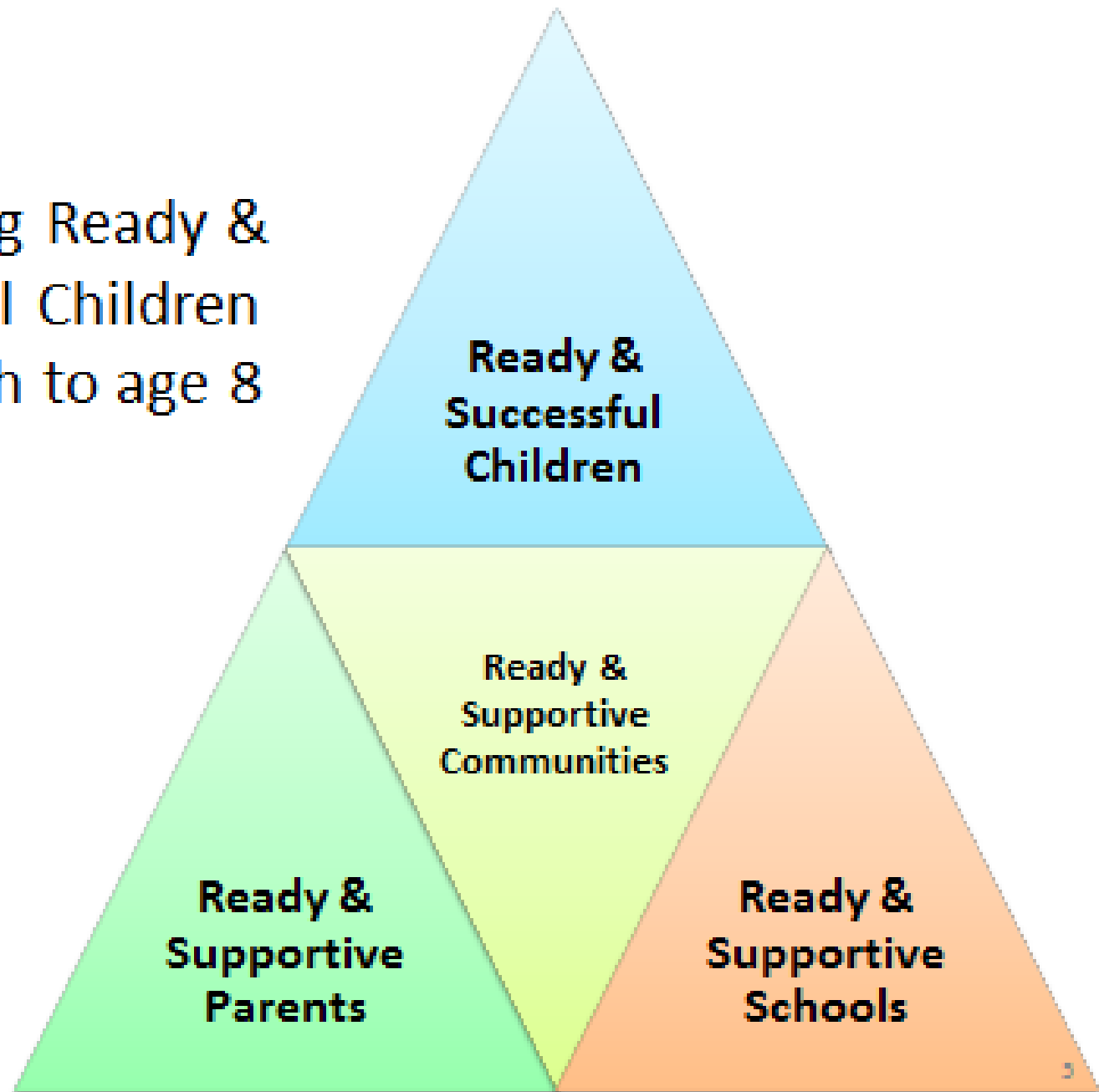
- More children ready for K and on track for 3rd grade success (reading, math, and self regulation).
 - Coordinated home visiting
 - Increased access to health care
 - Shift in funding that follows the effort.
 - Yoncalla is recognized as a community where families and young children are thriving.



Guiding Principles



Supporting Ready &
Successful Children
From Birth to age 8



Early Data

- Parents wanted a place to do fun things with kids
- Trust of the school was low
- Parents did not want
 - home visiting
 - Preschool
 - Transportation is a challenge

P-3 Alignment

- Conversations between early learning providers and schools.
- Shared professional development
- Relationship building.



How is P-3 alignment different in rural areas?

- Share with your neighbor.....
 - What is harder?
 - What is easier?



Regional Efforts



- Leveraging resources
- Universal Home Visiting/Play Groups
- Alignment between Kindergarten and Early Childhood Programs

Spreading across the region

- OCF Grant spread process to 2 neighboring communities:
 - Elkton and North Douglas (Drain)
 - 3 year commitment
 - Summer activities for incoming K and families
 - Ongoing data collection



Kindergarten Readiness Innovation Grant

- Regional Approach Involving:
 - Camas Valley, Elkton, Glendale, Drain-North Douglas, Glide, Reedsport, Riddle, Roseburg, Sutherlin, Winston-Dillard, Yoncalla, Lake County- Hay/Fremont, Union and North Lake



Community Needs and Resources Assessments

- KRPI grantees are focusing on 6 questions.



Community Needs and Resources Assessments

1. Who is in your community?
2. Are children school ready? What are the gaps and concerns?
3. What resources exist for early childhood?
4. How connected are early childhood and elementary schools?
5. What learning and development supports do children participate in before school?
6. What is the level of family engagement?



Some of the activities

- Community needs and resources assessments
 - Parent surveys
- Professional development
 - P-3 leadership teams
 - Cross sector training



More activities

–Family Engagement

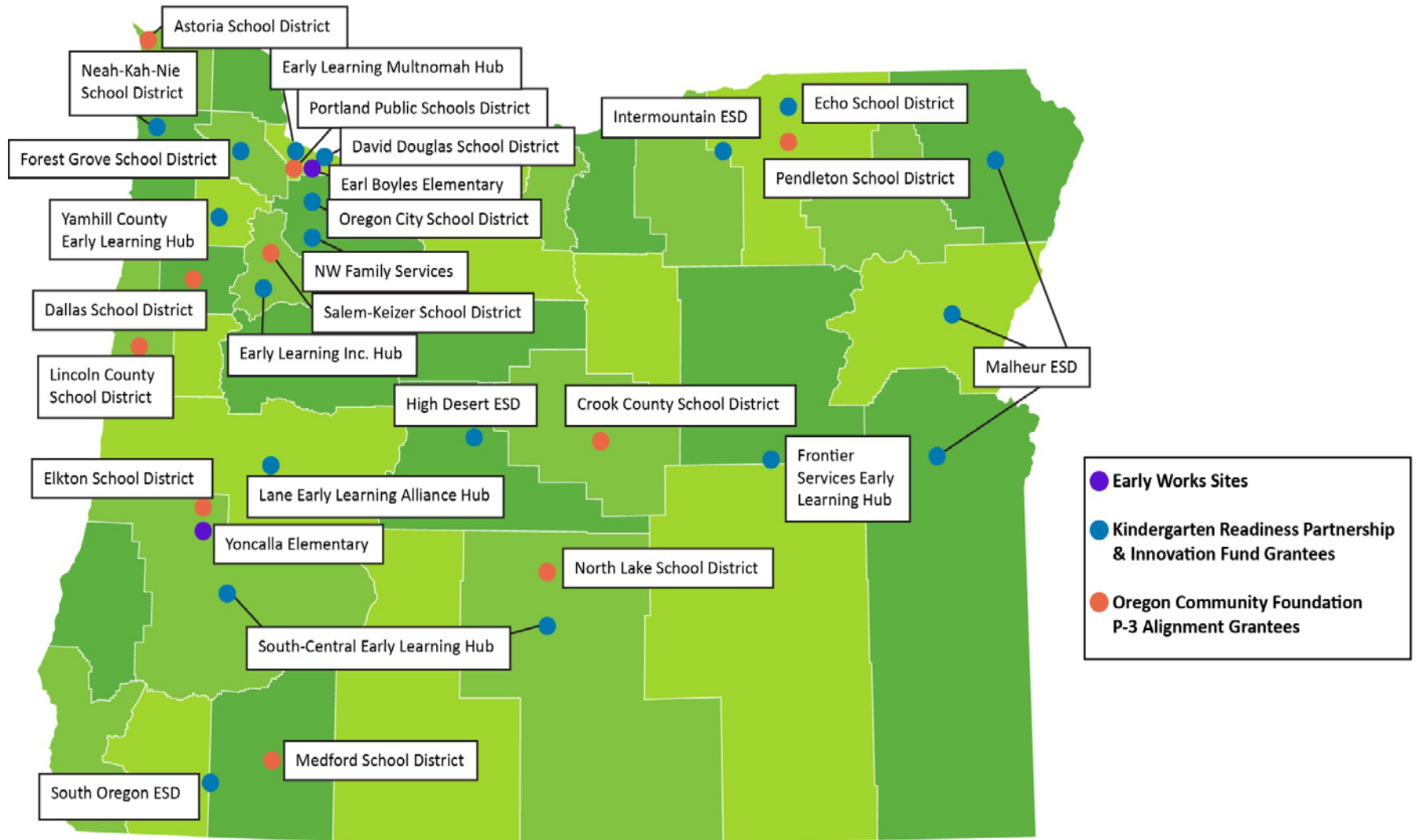
- Dialogic reading
- Play with a purpose
- Family reading night

–K readiness programs

- Ready for K
- Preschool- Glendale, working on one in Camas Valley



Ripple Effect



What's Working in Your Community for P-3 Alignment?



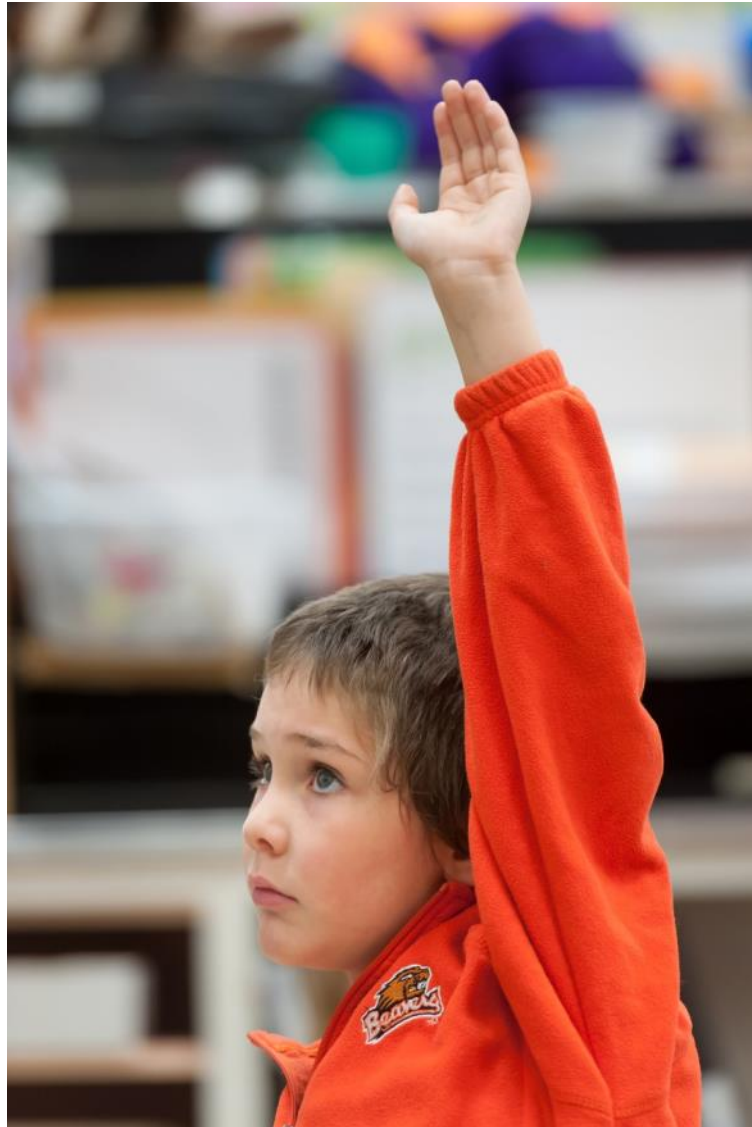
**What are challenges in your
community for P-3 alignment?**



**What do you envision for the future
in your community for P-3
alignment?**



Q&A



Thank You For Your Support!

