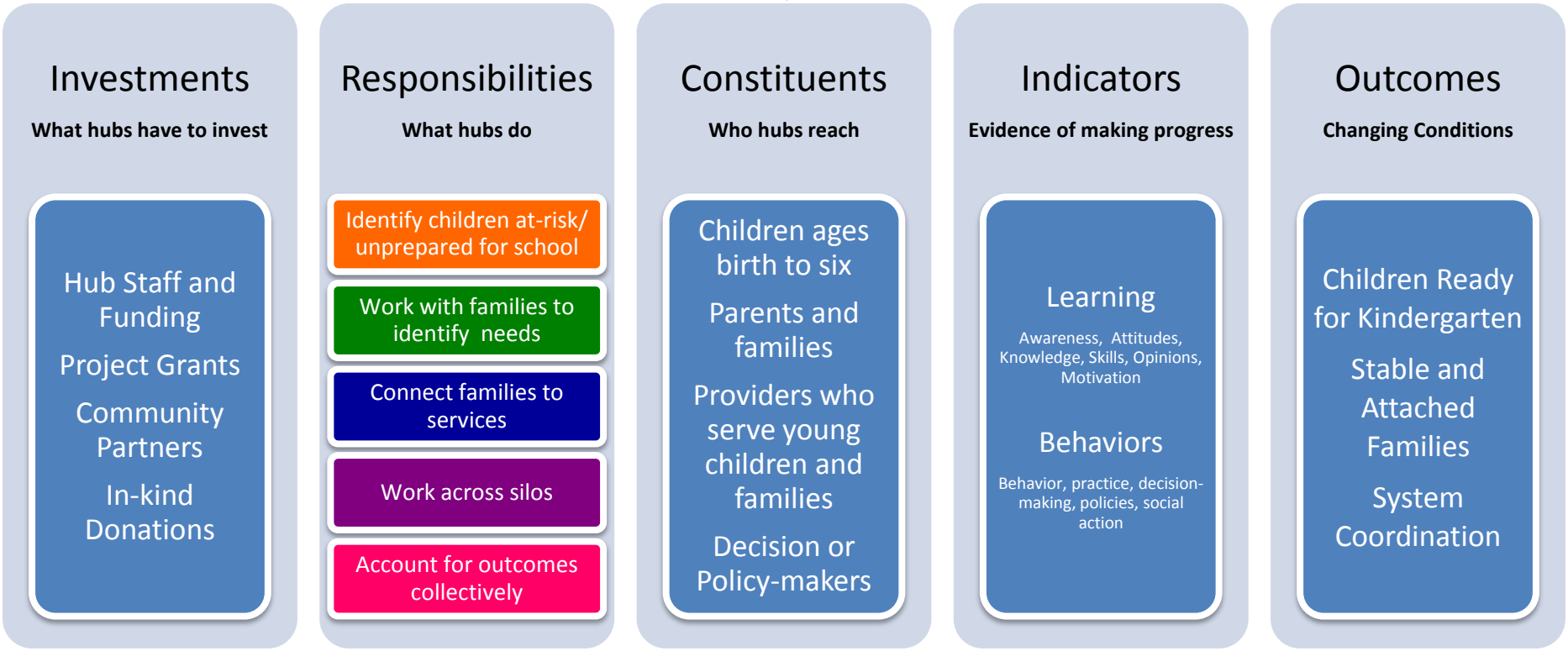


Oregon Early Learning Hub Roadmap

Vision for Oregon Early Learning Hubs



Early Learning Hub Development
 Build hub capacity to increase early childhood expertise, be positioned well in the region, engage stakeholders, increase efficient use of resources, contribute to Hub Learning Community, and ensure ongoing use of data and lessons learned to inform activities to reach indicators and outcomes.

Early Learning Division
 Hub TA & Learning Community System Infrastructure & Data systems Service Dollars Public Policy

Current Early Learning Hubs

Hub	Lead Contact
Early Learning Hub, Inc., Marion County	Kara Waddell, karawaddell@gmail.com
Yamhill Early Learning Hub, Yamhill County	Zeke Smith, Earlylearning@unitedway-pdx.org
Frontier Oregon Services Hub, Harney & Grant County	Patty Durroh, frontierhub@harneyesd.k12.or.us
South-Central Oregon Services Hub, Douglas & Lake County	Gillian Wesenberg, gxwesemb@co.douglas.or.us
Lane Early Learning Alliance, Lane County	Holly Mar-Conte, hmar@unitedwaylane.org
Early Learning Multnomah, Multnomah County	Katie Briedwell, kbriedwell@yamhillcoo.org

Round 2 Early Learning Hub Applicants

Hub	Lead Contact
Clackamas Early Learning Collaborative, Clackamas County	Rodney Cook, rodcoo@co.clackamas.or.us
Eastern Oregon Hub, Baker, Malheur & Wallowa County	Kelly Poe, kelly.poe@malesd.k12.or.us
Four Rivers Early Learning Hub, Gilliam, Hood River, Sherman, Wasco & Wheeler County	Melva Thomas, mthomas@co.sherman.or.us
Blue Mountain Early Learning Hub, Morrow, Umatilla & Union County	Cade Burnette, cburnette@umchs.org
Klamath Early Learning Hub, Klamath County	Kim Estes, kestes@co.klamath.or.us
Linn Benton Lincoln, Linn, Benton & Lincoln County	Susan Waddell, susan.waddell@lblead.k12.or.us
NW Regional, Clatsop & Tillamook County	Theresa Gartner, tgartner@nwresd.k12.or.us
Polk County, Polk County	Brent Demoe, demoe.brent@co.polk.or.us
South Coast Regional Early Learning Hub, Coos & Curry County	Barbara Bassett, Barbara.eld@mh.co.coos.or.us
Southern Oregon Early Learning Services, Jackson & Josephine County	Susan Fischer, FischeSE@jacksoncounty.org
Washington County Early Learning Hub, Washington County	Rod Branyan, wcelh@co.washington.or.us
WEBCO, Crook, Jefferson & Deschutes County	Hillary Seraceno, hils@descutes.org

Early Literacy Grant Awards

Lead Applicant	Funding Request
Baker County Community Literacy Coalition, Baker County	\$49,122
Coastal Families Together, Lincoln County	\$50,000
Early Learning, Inc., Marion County	\$96,000
Frontier Services Early Learning Hub, Grant & Harney Counties	\$100,000
Greater Albany Public Schools, Albany	\$44,976
Lane Early Learning Alliance, Lane County	\$100,000
Oregon Child Development Coalition, Malheur County	\$50,000
Oregon Coast Community Action, Coos & Curry Counties	\$50,000
Portland State University, Statewide	\$49,769
South Central Early Learning Hub, Douglas & Lake Counties	\$99,986
Umatilla-Morrow Head Start, Morrow & Umatilla Counties	\$50,000
Wallowa County Library, Wallowa County	\$50,000
Yamhill Early Learning Hub, Yamhill County	\$90,118
Sub-Total	\$879,971

Early Literacy Grant Provisional Awards

Lead Applicant	Funding Request
Child Care Partners, Hood River, Gilliam, Sherman, Wasco, & Wheeler Counties	\$50,000
Deschutes Public Library, Crook, Deschutes, Jefferson Counties; Warm Springs Reservation	\$49,998
Early Learning Multnomah, Multnomah County	\$100,000
Friends of the Children, NE Portland	\$35,600
North Central Education Service District, Gilliam, Sherman, Wheeler Counties	\$49,669
Oregon Children's Foundation (SMART), Klamath	\$28,074
Strengthening Rural Families, Benton County	\$45,549
Sub-Total	\$358,890

Additional Grants

Grant	Focus & Deadline
Kindergarten Partnership & Innovation Grant \$4 million	The Early Learning Council received 40 applications from ESDs, school districts, and early learning providers around the state. Awards will be announced at the May 22 Early Learning Council meeting in Pendleton.
Early Learning Professional Development Grant, \$400,00	The RFP for this grant is currently open for this grant, which expands partnerships involving community colleges to create professional development opportunities for early learning providers. The RFP closes May 12, and grants will be awarded at the June 25 Early Learning Council meeting in Salem.