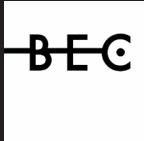


5th Annual Student-Centered Practices Conference

March 4, 2016 • Ambridge Center, Portland, OR



Business Education Compact

4800 SW Griffith Drive; Ste. 250 • Beaverton, OR 97005

www.becpdx.org

Diane Smith - dsmith@becpdx.org

Confederation of Oregon School Administrators

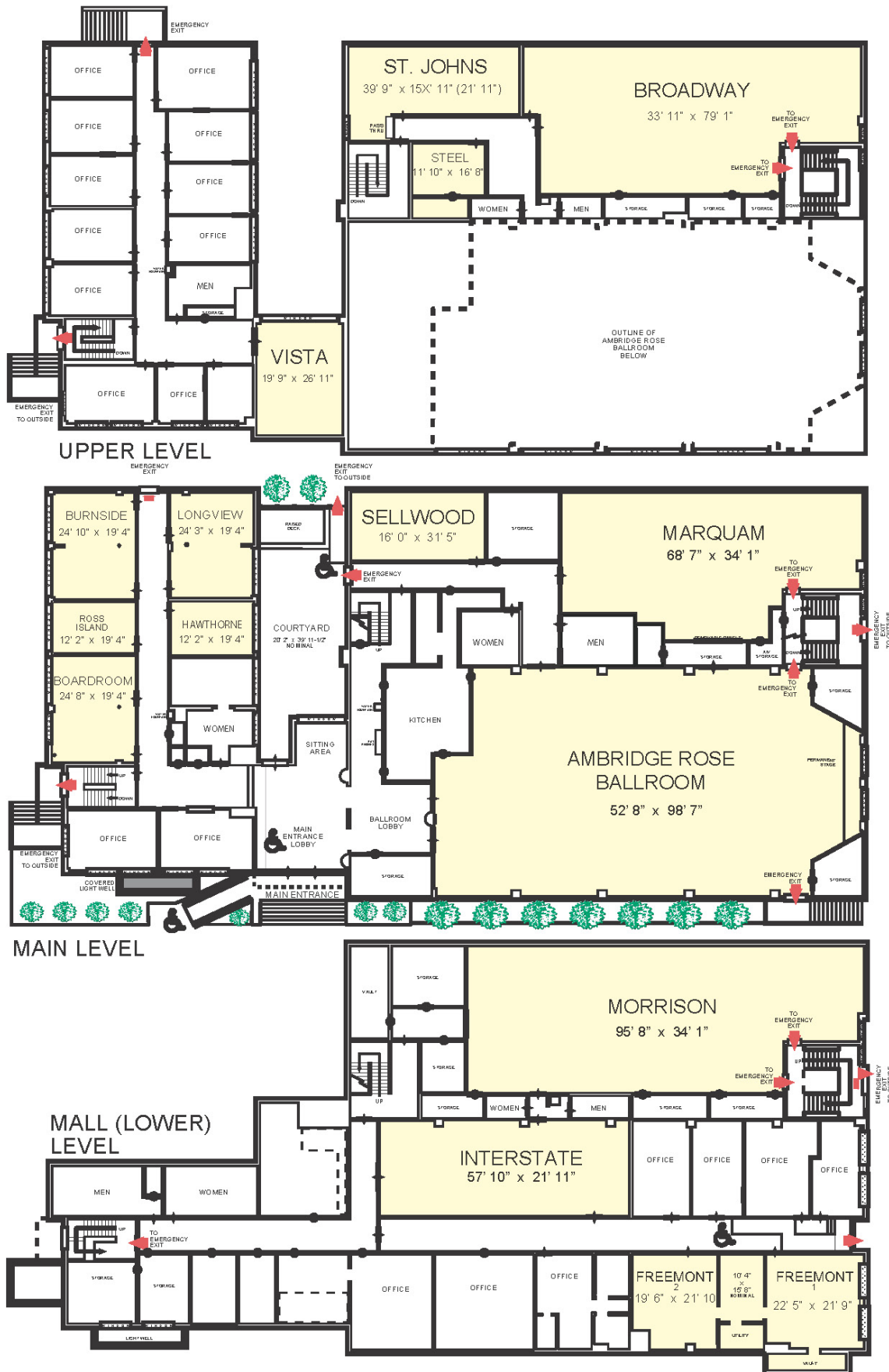
707 13th Street SE, Suite 100 • Salem, Oregon 97301

www.cosa.k12.or.us • 503-581-3141

Colin Cameron - colin@cosa.k12.or.us



HOTEL FLOOR PLANS



FEATURED SPEAKER



Rick Wormeli

One of the first Nationally Board Certified teachers in America, Rick Wormeli brings innovation, energy, validity and high standards to both his presentations, and his instructional practice, which includes 30 years teaching math, science, English, physical education, health, and history and coaching teachers. Rick's work has been reported in numerous media, including ABC's *Good Morning America*, *Hardball with Chris Matthews*, *National Geographic* and *Good Housekeeping* magazines, *What Matters Most: Teaching for the 21st Century*, and the *Washington Post*.

Rick Wormeli is a columnist for the *National Middle School Association's Middle Ground* magazine, and he is the author of the award-winning book, *Meet Me in the Middle*, as well as the best-selling books, *Day One and Beyond*, *Fair Isn't Always Equal: Assessment and Grading in the Differentiated Classroom*, *Differentiation: From Planning to Practice, Grades 6-12*, *Metaphors & Analogies: Power Tools for Teaching any Subject*, all five from Stenhouse Publishers, as well as *Summarization in any Subject*, published by ASCD, and the Homework foldout from Incentive Publications. His classroom practice is a showcase for ASCD's best-selling series, *"At Work in the Differentiated Classroom,"* and Rick Wormeli is a contributing author to *Middle School Matters* and *Because You Teach*, published by Incentive Publications.



CONFERENCE SCHEDULE

7:30 to 8:30 Registration Ambridge Ballroom

8:30 to 10:00..... **1ST GENERAL SESSION** Ambridge Ballroom

Welcome: Salam Noor, Deputy Superintendent, Oregon Department of Education

Speaker: Rick Wormeli "Grades/Grading"

The A-F grading system has been around since 1897 when it was used by Holyoke College to provide a description of performance with percentages and letter grades. Yet we know that a letter grade doesn't exclusively reflect everything a student knows and can do in a grade-level subject. How can we measure and report student learning more accurately, without reinforcing an environment where students are chasing points and only learning for the short term?

10:00 to 10:15..... Break / Visit Sponsors

10:15 to 12:15..... **2ND GENERAL SESSION** Ambridge Ballroom

Speaker: Rick Wormeli "Assessment"

Teachers struggle to use proficiency-style assessments within varied instructional schedules. And it's frequently hard to personalize instruction and assessment in large classes. How can we get evidence over time and from multiple incidences of expression? And where do we find the time to offer rapid interventions and effective assessments? Rick will explore these issues and share rubric do's and don'ts, including advice on moving from a rubric score to a grade.

12:15 to 12:50..... Lunch Buffet / Visit Sponsors

1:00 to 1:50 **BREAKOUT SESSIONS**

Top Down, Bottom Up and Side to Side: Finding the Proper Balance When Implementing Proficiency Based Practices Sellwood Room

Speaker: Chad Putman, Director of Teaching and Learning, Coos Bay Public Schools

Diana Spillman, 5th Grade Teacher, Millacoma School, Coos Bay Public Schools



Using Coos Bay as a case study, we will consider the ramifications of a top down vs. bottom up implementation. We will talk about recognizing the importance and need for change before actually starting the journey, as well as leveraging the importance of instruction over simply reporting grades. District representatives will share the newly developed Coos Bays Student Centered Teaching and Learning Handbook for session participants to review.

Identifying and Overcoming the Obstacles to Implementing Proficiency Based Education Marquam Room

Speakers: Dr. Donald L. Kordosky, Superintendent, Oakridge SD

Greg Chapman, Principal, Oakridge Jr./Sr. High, Oakridge SD



This session provides details for addressing the obstacles to a district-wide evolution from social promotion to proficiency based education. Presenters will examine specific challenges encountered in their district's seven-year proficiency journey as well as the methods they used to overcome those hurdles. Hurdles we have tackled include the following: electronic grade books, how to deal with homework as a relevant component of PBE, public perceptions, student academic interventions, identification and limiting of standards, student behavior rubric and grading, PBE implementing processes and challenges, students transferring in to a PBE system from a traditional social promotion system, how to deal with late work, garnering Board and staff support, incompletes and timelines, multiple product attempts and

issues involving athletic eligibility.

Are Your Students Credit Deficient? Using Oregon's Flexible Credit Option Policy to Increase Your Graduation Rate Morrison Room

Speaker: Diane Smith, Director of Teaching & Learning, Business Education Compact
Umatilla SD 7-12



Oregon has one of the most flexible credit option policies of any state. And districts are working hard to connect students with solid credit-bearing opportunities that can improve skills, reduce drop-out rates and increase graduation rates. Uniquely, the flexible credit option model can help solve all of these problems while connecting to student interests and potential career areas. Together with BEC and Oregon ASK, Umatilla SD has figured out how to combine all of these options AND offer badges to students to demonstrate proficiency! Session participants will learn how to get help in making this happen in their districts, review sample documents that comply with Division 22, and hear from Umatilla SD about the benefits and structures in place to make this happen.

From Proficiency to a Standards-Based Model Ambridge Ballroom

Speakers: Carlos Sequeira, Collaboration Director, Bethel SD
Kelly Leguizamon, Math Instructor/District TOSA, Prairie Mountain School, Bethel SD



Description: Year 3, from "Proficiency" to a "Standards-Based Model." Bethel SD educators are in their third year of using proficiency-based practices in classrooms. Although the journey has been arduous, educators continue to make improvements towards a "Standards-Based" model with a focus on a rigorous curriculum (alignment of Power Standards), aligned instructional practices, and measuring and reporting student learning. This session will focus on how teachers have addressed the challenges and successes that come along with the adoption of common practices and a common reassessment system that focus on "student learning" rather than on the accumulation of points.

1:50 to 2:00 Break / Door Prize Drawings

Door prizes provided by: Columbia Sportswear, IBM and Lewis & Clark College



2:00 to 3:30 **3RD GENERAL SESSION** Ambridge Ballroom

Speaker: Rick Wormeli "Homework/Q&A"

The roots of homework go back to the late 19th century when schools struggled to get elementary students to attend regularly. And through cycles of pro-homework movements and anti-homework movements, parents, students and teachers have not always been on the same page. What constitutes 'good' homework? Should you include it in your assessment results and grading or is it simply practice that doesn't count? How much work should students be expected to do outside the classroom? Join Rick in a review of quality homework practices and engage Rick in questions to refine your student-centered practices.

3:45 to 5:00 More Q&A and Discussion with Rick Ambridge Ballroom

5:00 Adjourn Conference

2016 COSA PROFESSIONAL LEARNING EVENTS

JANUARY 2016

11-12 Common Formative Assessments 2.0 - McMinnville..... Willamette ESD - Yamhill Center
28-30 OACOA/OASE Winter Conference..... Salishan, Gleneden Beach
29..... New Superintendents Academy..... Salishan, Gleneden Beach
30..... OACOA Seminar Series Salishan, Gleneden Beach

FEBRUARY 2016

5-6 OALA Winter Conference..... Portland
12..... Future Teachers Conference..... Western Oregon University
18..... Eric Jensen Conference - Engaging Students with Poverty in Mind..... Eugene
19..... Eric Jensen Conference - Leading with Poverty in MindSalem
24..... New Special Education Directors/Coordinators Seminar Series Red Lion, Salem
26..... New Superintendents Academy Viticulture Center, Salem

MARCH 2016

3 Rick Wormeli Conference..... Inn at Commons, Medford
4 Annual Oregon Proficiency Conference featuring Rick Wormeli.....Ambridge Center, Portland
9-11..... State English Learners Alliance ConferenceHilton, Eugene
14-15 Spring Breakthrough Coach Al Kadar Center, Wilsonville
18-19 Common Formative Assessments 2.0 - Ashland..... Lincoln School, Ashland
20-21 Common Formative Assessments 2.0 - ClackamasClackamas ESD

APRIL 2016

22..... New Superintendents Academy.....Hilton, Eugene
22..... OACOA Seminar SeriesHilton, Eugene

MAY 2016

17-18 Common Formative Assessments 2.0 - Ashland..... Lincoln School, Ashland
19-20 Common Formative Assessments 2.0 - ClackamasClackamas ESD

JUNE 2016

22..... 42nd Annual COSA Pre-Conference Convention Center, Seaside
23-24 42nd Annual COSA Conference Convention Center, Seaside

AUGUST 2016

3-5 Statewide Assessment Conference.....Hilton, Eugene

OCTOBER 2016

5-7 ODE/COSA Special Education Administrators Annual Fall ConferenceHilton, Eugene
23-25 Annual Principals & Teacher Leaders Conference..... The Riverhouse, Bend



www.cosa.k12.or.us

BEC BOARD OF DIRECTORS

Cari Bacon Flick.....	The Standard
Susan Carlile.....	Portland State University - Graduate School of Education
Kelly Carlisle.....	Salem-Keizer SD
Randy Dalton	Molalla High School
Scott Fletcher	Lewis & Clark College
Richard Gilliam	Portland Public Schools
Richard Goddard	Portland General Electric
Stephen Jupe	Scappoose SD
Grant Kimball.....	Brand Incite
Daylene Long	Vernier Software & Technology
Jim Maestretti	Cambia Health Solutions, Inc.
Colleen Mileham	Oregon Education Association
Michael Pranger.....	Daimler Trucks North America LLC
Charles Ransom, Jr.	Woodburn SD
Monica Reynolds	Microsoft Bellevue
Carlos Sequeira	Bethel SD
Hank Sigmon.....	First Tech Federal Credit Union
Courtney Vanderstek.....	Marylhurst University
Matt Wangler	Ashwood Group LLC
Linda Wilson	IBM
Wayne Young.....	Individual Member

COSA BOARD OF DIRECTORS

Bob Bolden.....	Eugene SD
Colt Gill (Past-President).....	Bethel SD
Jim Golden.....	Greater Albany SD
Ericka Guynes.....	David Douglas SD
Craig Hawkins (Executive Director).....	Confederation of Oregon School Administrators
James Hiu.....	Gresham-Barlow SD
Lee Loving.....	Redmond SD
Toshiko Maurizio	Beaverton SD
George Mendoza.....	Morrow County SD
Betsy Miller-Jones.....	Oregon School Boards Association
Cindy Quintanilla (President).....	North Clackamas SD
Ginger Redlinger	Oregon Trail SD
Jeff Rose.....	Beaverton SD
Danielle Sheldrake.....	Beaverton SD
Matt Thatcher (President-Elect)	Cascade SD
Victor Vergara	Oregon Association of Latino Administrators
Tom Welter.....	Oregon School Activities Association

PSU Graduate credit available at the 5th Annual Student-Centered Practices Conference 2016

Participate in the COSA session listed above and complete an assignment to earn graduate credit through Portland State University's Graduate School of Education.

To earn the credit:

- **Attend the full schedule of courses and workshops and complete a required written assignment. The conference will offer your option of 1 ELP 506 (administrator credit) or 1 CI 810 (for teachers).**

Tuition: \$80 per credit

One credit option

Registration

Contact Julie Wolleck at the PSU booth at the conference for more information.

Grades, receipts, and transcripts

The course above will be graded **Spring Term 2016**. Grades will be available on the PSU website on **June 15th, 2016**. For instructions on accessing your grade, obtaining a receipt, or getting transcripts, visit pdx.edu/ceed/cooperative-credit-program-information-for-students.

For more information

To request a copy of the assignment instructions or to get information about partnering with PSU to offer credit for your school or district's professional development activities, contact Julie Wolleck at jwolleck@pdx.edu.

Continuing Education

Julie Wolleck
Program Manager, Cooperative Credit
jwolleck@pdx.edu | 503-725-8234



CONFERENCE SPONSORS



Ian Deming.....	Alma.....	ian.deming@getalma.com
Sue Hildick.....	Chalkboard Project.....	hildick@chalkboardproject.org
Scot Headley.....	George Fox University	sheadley@georgefox.edu
Justin Meyer	JumpRope, Inc.....	justin@jupro.pe
Johnna Timmes	Oregon Department of Education	johnna.timmes@state.or.us
Colleen Mileham.....	Oregon Education Association	colleen.mileham@oregoned.org
Betsy Miller-Jones.....	Oregon School Boards Association.....	bmillerjones@osba.org
David Lipkin	SchoolHack Solutions	david@schoolhack.io

[illegible]

EDUCATIONAL LEADERSHIP



INITIAL ADMINISTRATOR LICENSE (IAL)
CONTINUING ADMINISTRATOR LICENSE (CAL)

PSU prepares outstanding educational leaders of tomorrow

PSU offers two programs for school leaders: Initial Administrator License (IAL) and Continuing Administrator License (CAL). Underlying all programs is the assumption that, at every level, traditional approaches to education should be challenged. Our programs reflect a commitment to leadership that both models and teaches a curriculum responsive to social justice and the increasing diversity in Oregon's communities.

PSU credit available for this event!

1 grad credit | ELP 506 | \$80

See PSU representative at the registration table

Information:

pdx.edu/elp/ed-admin

503-725-4619 or 1-800-547-8887 ext. 54619



Graduate School
of Education

PORTLAND STATE UNIVERSITY



Confederation of Oregon School Administrators
"We Develop and Support Educational Leaders to Ensure Student Success"



make learning real™
BUSINESS
EDUCATION
COMPACT

Business Education Compact
"Make Learning Real"

Certificate of Attendance

This certificate is presented to:

Name

8

CPD Units Awarded

for having participated in the 5th Annual Student-Centered Practices Conference.
March 4, 2016 • The Ambridge Event Center, Portland

Oregon Professional Standards:

- ☒ 1.0 Visionary Leadership
- ☒ 2.0 Instructional Improvement
- ☒ 3.0 Effective Management
- ☒ 4.0 Inclusive Practice
- ☒ 5.0 Ethical Leadership
- ☒ 6.0 Socio-Political Context

Business Education Compact— Local, quality education experts



Did you know . . .

- Credit no longer needs to be measured by the Carnegie Unit?
- Student-centered practices can reduce your summer school costs and improve your graduation rate?
- Students can earn credit for what they learn outside of the classroom—extra-curricular activities, internships, etc.?
- Middle school students can earn high school academic credit through after school programs?



Diane Smith
BEC Director Teaching & Learning

We've helped 135 Oregon school districts solve their education challenges. How can we help you?

Contact:

Tamra Busch-Johnsen, Executive Director
(503) 536-4301 tbuschjo@becpdx.org

Business Education Compact

4800 SW Griffith Dr. Suite 250 Beaverton, OR 97005
www.becpdx.org

IMPACT K-12 EDUCATION Teacher licensure & endorsement programs

M.A. in Teaching
M. in Education
ESOL & Reading
Endorsement Programs

Learn more: marylhurst.edu/education



A premier applied liberal arts and business
university serving Oregon and beyond since 1893.





Proud to be your partner.

You work every day to make our schools better. So do our expert faculty and thousands of alumni. Together, we can make change.

graduate.lclark.edu

Programs for:
teachers,
education leaders,
school counselors, and
school psychologists.

Lewis & Clark
Graduate School of
Education and Counseling






teachers *try* science

teacherstryscience.org

Teachers TryScience helps educators strengthen their instruction in STEM subjects and better prepare students for 21st Century careers.

- Mission: Support teacher instruction in STEM
- More than 200 project-based lessons, 79 pedagogical supports
- Next Generation Science Standard Lessons (NGSS)
- Social networking tools for collaboration
- Training Materials on using site, creating your own

Created in Partnership by: IBM, New York Hall of Science and TeachEngineering.org



COSA LICENSURE AND DEGREE PROGRAMS

With a commitment to leadership and the drive to prepare aspiring educational leaders to gain the tools and knowledge necessary for improving the teaching and learning in schools, the COSA-CUC Licensure and Degree Programs offer a new take on challenging the status quo of the educational world.

PROGRAMS OFFERED:

- (1) Teacher Leader Specialization (coming Spring 2015)
- (2) IAL, Initial Administrative License
- (3) IAL with Master's Degree in Educational Leadership
- (4) CAL, Continuing Administrator License
- (5) Doctorate in Education Leadership

PROGRAMS PROVIDE:

- **CONVENIENCE.** Candidates will be able to accomplish coursework online to interact with professors and colleagues via an exemplary course delivery system. This format allows candidates online access 24/7 and limits the need to travel and meet weekly or on weekends. Job-embedded, career-focused internships and coursework provided will drive relevant and productive experience for all students.
- **HIGH-QUALITY LEARNING.** COSA's partner Concordia University of Chicago is a NCATE accredited university and a national leader in educational training. The COSA Board of Directors are committed to a program with the highest and most rigorous standards of admission and completion.

- **COST-EFFICIENT SOLUTIONS.** Each program's cost is currently maintained below the mean cost of existing licensure programs in the state and candidate's tuition rate is locked at their admission rate. The online format will add efficiencies and lower costs to participants. Up to 50% of a candidate's qualifying coursework may be transferred from other regionally accredited graduate schools.

Contact TRINA HMURA at the COSA office:
trina@cosa.k12.or.us 503.480.7214

Review the COSA website:
<http://www.cosa.k12.or.us/licensure/academics>

FIND OUT MORE:



Let's build a better education, from the gradebook up.

We're experts in standards-based grading and its practical implementation. JumpRope is more than a software company. We partner with you to imagine possibilities and bring them to reality.



LEARN MORE AT WWW.JUMPRO.PE