

# Restorative Justice in Education through Practice



# Norms

**A**sk questions

**E**ngage fully

**I**ntegrate new information

**O**pen mind to diverse views

**U**tilize what you learn

# Purpose

Discuss an overview of restorative justice in education.

Address educational equity through transformative justice rooted in school climate, safety, and learning.

Explore creating just and equitable learning environments, nurturing healthy relationships, repairing harm and transforming conflict.



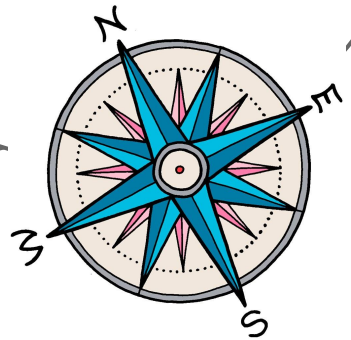
# Social Emotional Learning



## Building Relationships!

There is no true restorative justice without authentic and dignifying relationships.

# 01. Overview of Restorative Justice in Education through practice



# THE LITTLE BOOK OF Restorative Justice in *Education*



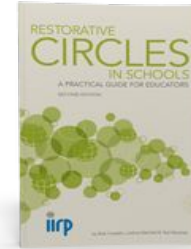
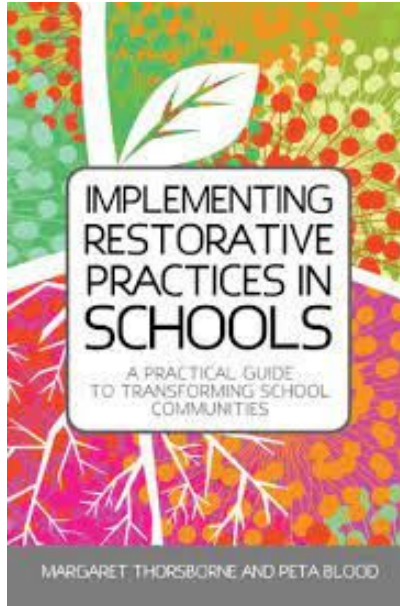
Fostering Responsibility,  
Healing, and Hope in Schools

KATHERINE EVANS AND  
DOROTHY VAANDERING



THE LITTLE BOOKS OF JUSTICE & PEACEBUILDING

## Resources and Sources



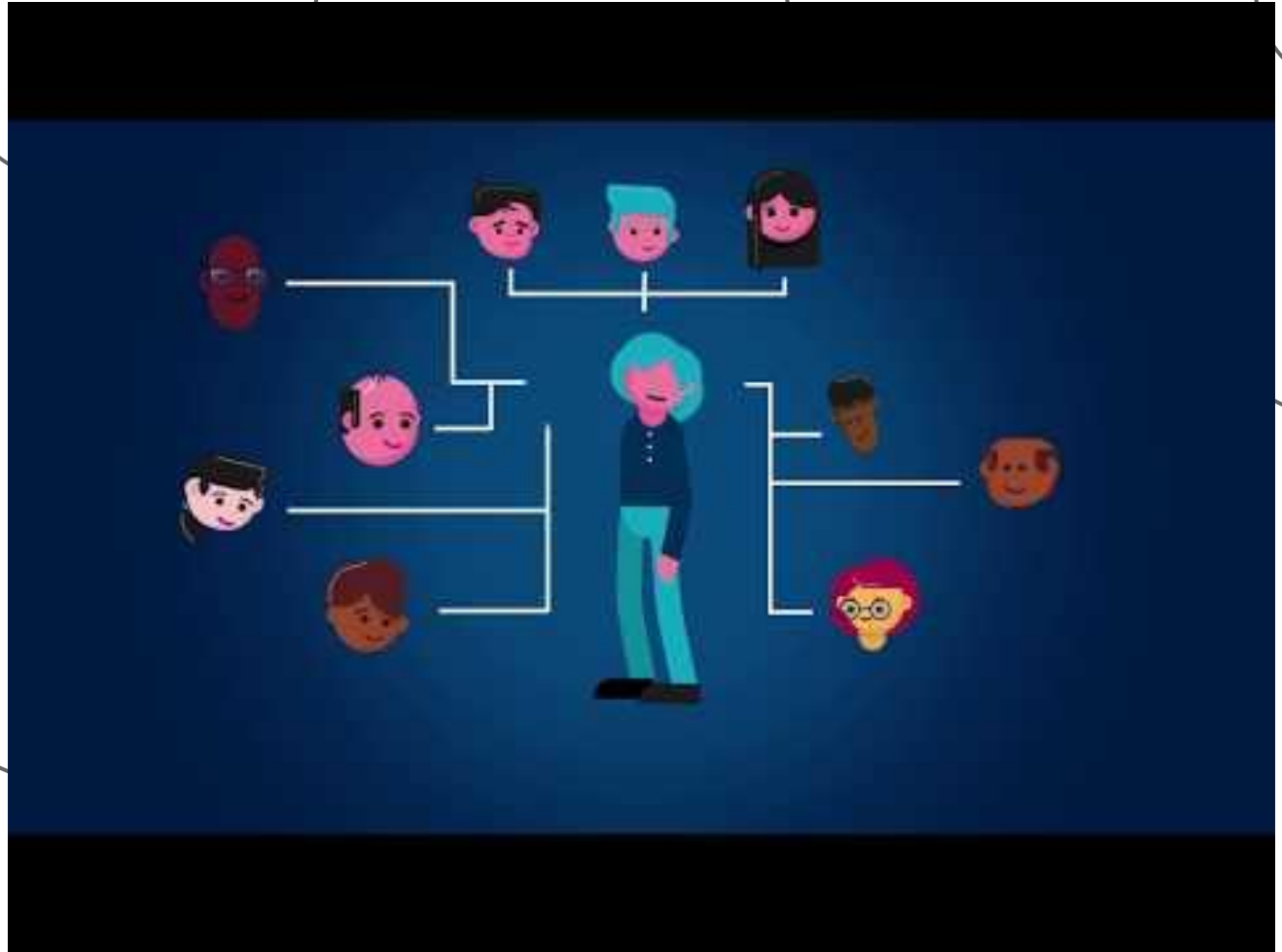
iirp

Graduate School

# Restorative Justice in Education is...

- **a vision of education** that acknowledges that our individual and collective well-being is enhanced less through personal striving than through collective engagement and support.
- **an invitation** to create educational cultures that emphasize social engagement rather than social control.
  - RJE invites educators to engage with students, students' parents/caregivers, colleagues, curriculum, and educational institutions in a way that *honors* individuals in the context of their communities.

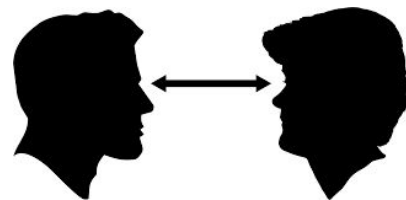
# What is Restorative Practices?





# Quick reflection on restoration

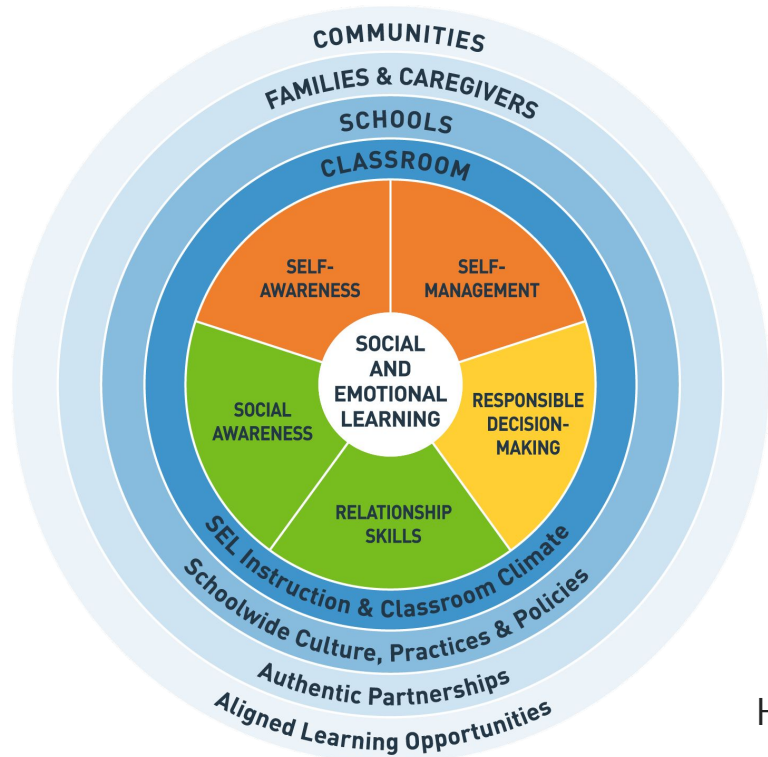
- ❖ What are some words or phrases that stood out to you from the video? WHY are they important for you?
- Think of a time that you had a breakdown in a relationship.
  - What was necessary to restore that relationship?
  - What was that process like for you?
  - How is that relationship now?



# Restorative Practice Explained

- The restorative practices movement seeks to **develop good relationships** and **restore a sense of community** in an increasingly disconnected world.
- With the push for academic achievement and accountability, there seem to be many new mandates imposed on classroom teachers and school administrators, leaving less time for building relationships and connections with students. Paradoxically, **without those relationships, students feel less connected to school and are less likely to excel.**

**Using restorative practices in classrooms - in dealing with discipline and in implementing change in school - will help you and your students improve relationships, behavior and environment, all of which positively impact academic performance.**



02

# Examining the Components of RJ/RP in Education

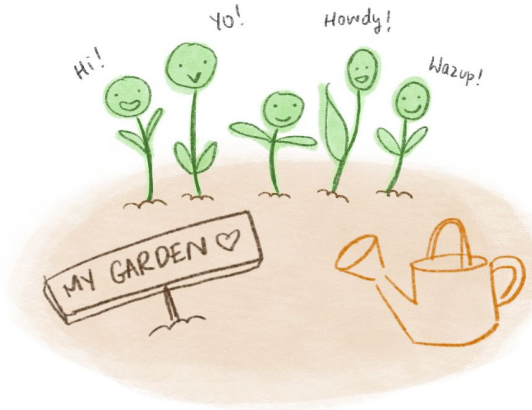
How do we create educational cultures that emphasize social engagement rather than social control?

# Three Components of Restorative Practice

## 1. Creating Just & Equitable Learning Environments



## 2. Nurturing Healthy Relationships



## 3. Repairing Harm & Transforming Conflict



# Reflection

- Reflect & Discuss: What practices are in place in your building/ department/ district for each of the components.
- Write: One practice per sticky note - corresponding color
- Discuss: Do you have more practices in one column than the other? If so, what are the implications?



# CONTINUUM OF RESTORATIVE PRACTICE





03

# Addressing Educational Equity

Restorative Justice/Restorative Practices

**“We must also transform the conditions that make this possible.”** ~Mariame Kaba

How do we develop a path towards accountability for racial incidents in your community?

It's not about “just implementing” a set of practices.





# 5 Myths about Restorative Justice

- ❖ We need to address *the systems* and *the culture* that allow for or encourage these incidents to occur
- ❖ It's a mindset *not* procedures
- ❖ Not *Chequity*, but a *framework* for how we view teaching and learning
- ❖ Will *not* solve racism and bias in our schools!
- ❖ *Everyone* needs to be on board
- ❖ **It's a process!**

# No matter where you are in journey today, ask yourself...

What kinds of community infrastructure can we create to support more safety, transparency, sustainability, care and connection?

What are the skills we need to be able to prevent, respond to, heal from, and take accountability for harmful behaviors?

What are some of the conditions, behaviors, and practices in our community that help set the stage for student's behavior?

How can **WE** change this?

# Infrastructure of RP

- **Universal Supports**
- **Healthy Climate & Culture**
- **Social Emotional Learning/CASEL**
- **Student/Family Engagement**
- **Culturally Responsive Education**
- **Trauma Informed Practices**

Write a script for the first interaction/meeting that you will have with your students, families, and/or staff?

Things to consider:

- Who are you?
- What is your vision for the work that you do?
- How will you invite and welcome students/staff/families into the space?
- How do you intend to invite students/families/faculty to participate in co-creating spaces and experiences in your school?
- How will you express that all students/families/staff are welcome?



***Francesca Sinapi:***

Equity, Access and Engagement  
(EAE) Officer

[sinapiff@hsd.k12.or.us](mailto:sinapiff@hsd.k12.or.us)



***Dr. Xylecia Fynn Aikins:*** Universal Supports  
TOSA (7-12 and Restorative Practices)

[fynnaikx@hsd.k12.or.us](mailto:fynnaikx@hsd.k12.or.us)



***Yessica Hardin Mercado:***

Equity, Access and Engagement  
TOSA

[sinapiff@hsd.k12.or.us](mailto:sinapiff@hsd.k12.or.us)



***Alma Hernandez:*** Program manager and  
Community Care Coordinator

[hernanda@hsd.k12.or.us](mailto:hernanda@hsd.k12.or.us)