



ELD Listening Session: Creating Early Learning Opportunities Rooted in Equity

Miriam Calderon, Early Learning System Director

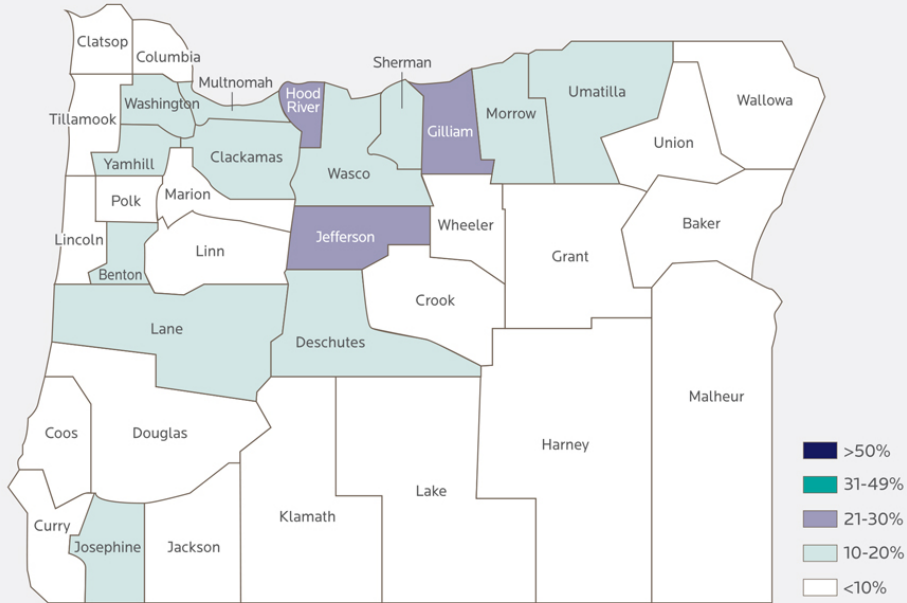
Brett Walker, P-3 Specialist

October 22, 2019



Zip code, income, and race/ethnicity are powerful predictors of a child and family's access to high-quality early care and education

Figure 6. Percent of Oregon young children 0-3 with access to regulated child care^{xvii}



Least Affordable States for 4 year olds in Single Parent Families

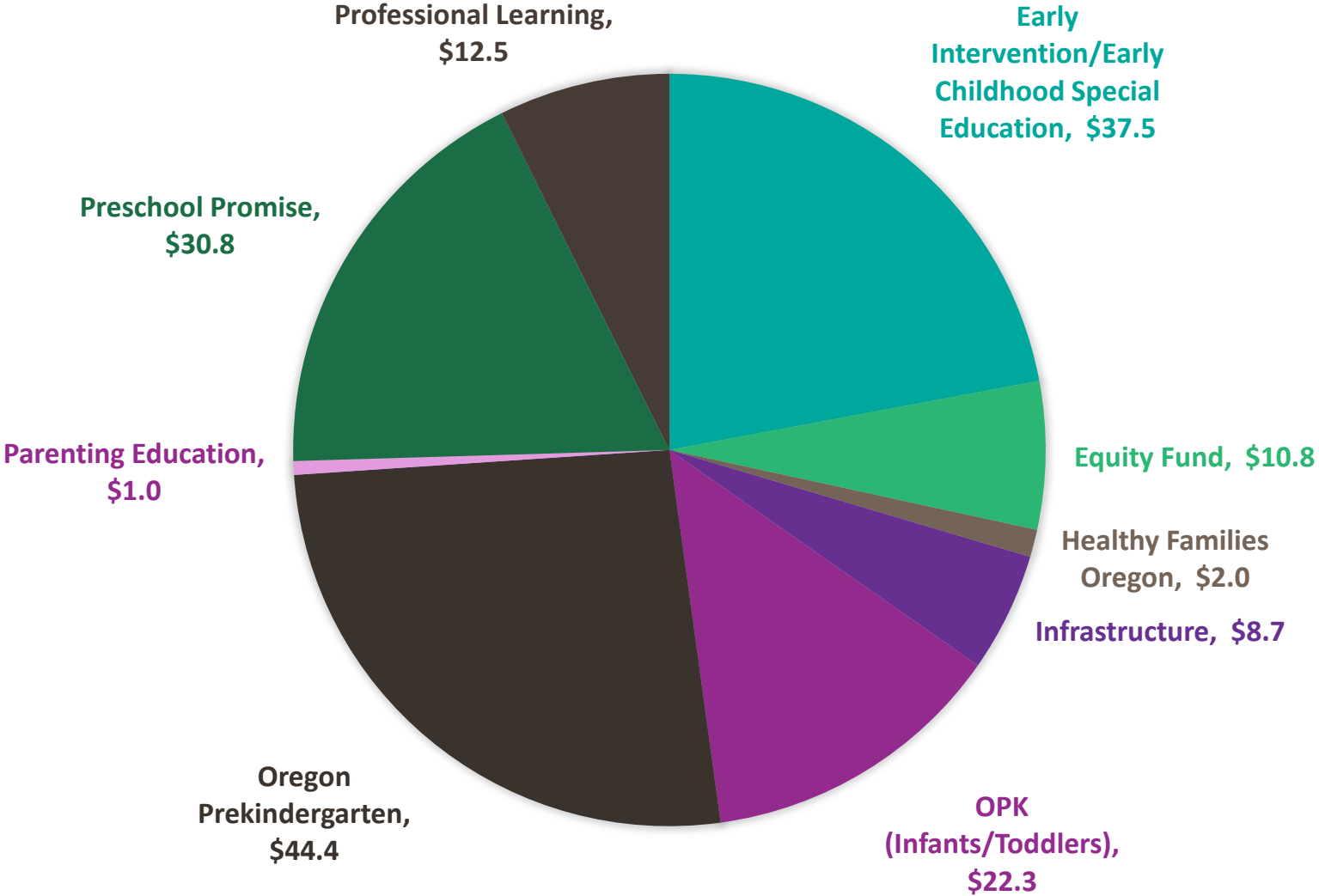
RANK	STATE	MEDIAN INCOME	PERCENTAGE OF THE MEDIAN INCOME
1	Nebraska	\$25,932	43.0%
↓			
7	Oregon	\$23,796	41.3%

Child Care/Early Learning is **Not Available** and **Not Affordable**, exacerbating inequities

The EARLY LEARNING ACCOUNT of the

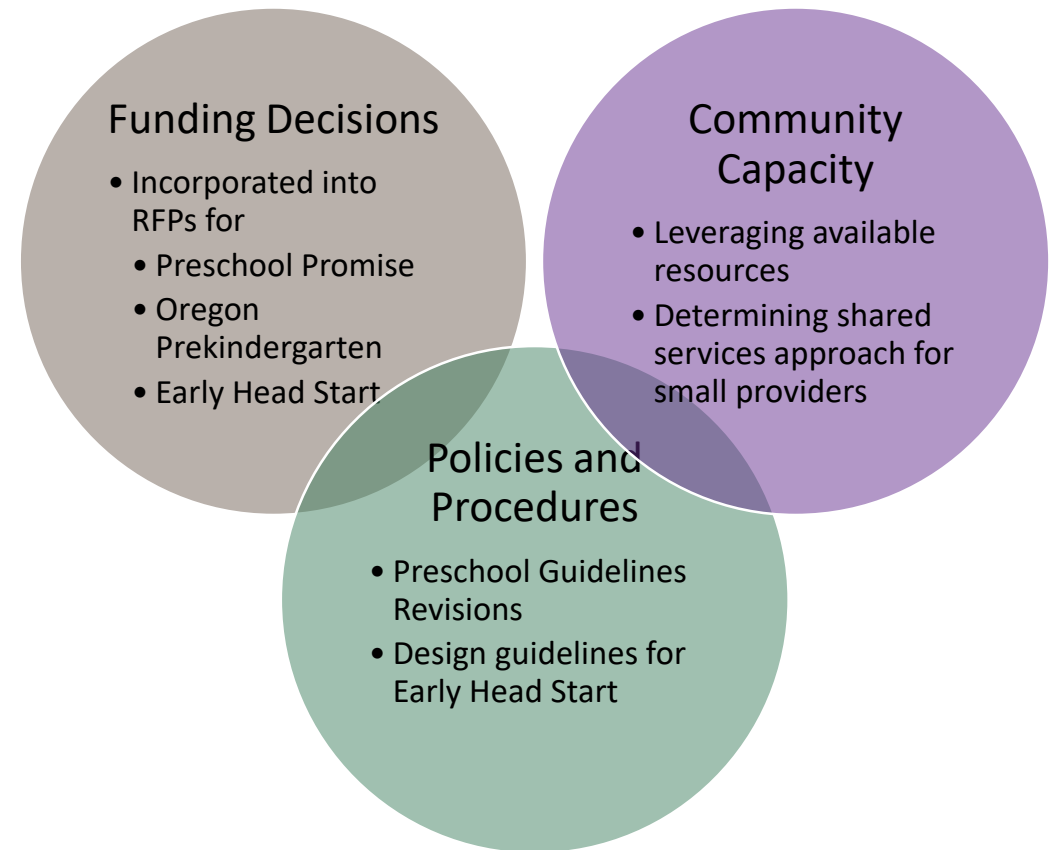


STUDENT SUCCESS ACT

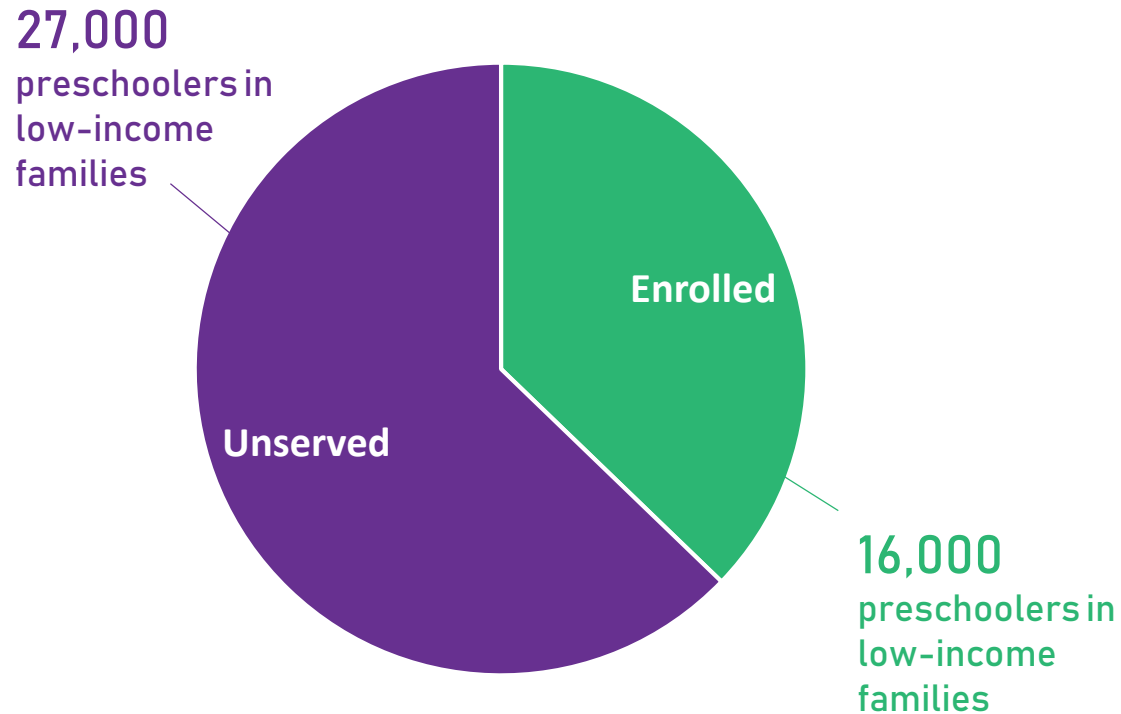


ECE Sector Planning Drives Investments

- Hubs leading process with CCR&R and Head Start
 - Families
 - Schools
 - Early Childhood Programs
 - Culturally-Specific Orgs
 - Health Sector
 - Human Services Sector
 - Other key partners



Identifying Priority Populations to be Served in High-Quality Programs



- Insufficient to cover the **gap** of children and families that need services
 - 2,500 slots in Preschool Promise
 - 8,100 slots improved in OPK
 - 1,200 slots in OPK/Early Head Start
- Identify priority populations
- Ensure that recruited programs are responsive to needs of identified populations

Programs must be of sufficient quality to reduce opportunity gaps

When programs are of sufficient quality...

Minimum class size and ratio

Diverse, skilled educators

Screening and referral

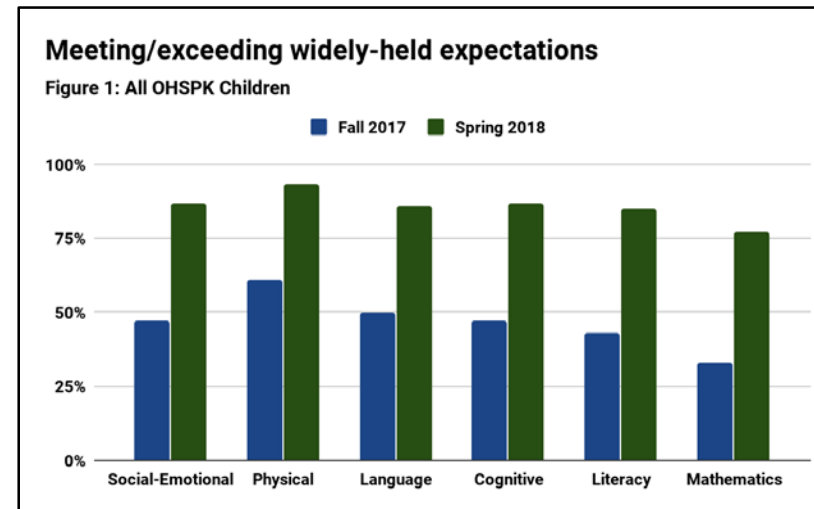
Developmentally - and culturally- appropriate curriculum

Formative Assessment

Monitoring

Family Support & Partnership

...they have a significant long- and short-term impact on children



Other Investments in the EL Account that Will Increase Families' Access to High-Quality Early Learning



Equity Fund



Parenting Education



Healthy Families Oregon

Discussion/Listening Session

In small groups, review some of Oregon's standards for high quality ECE programs, and discuss the following:

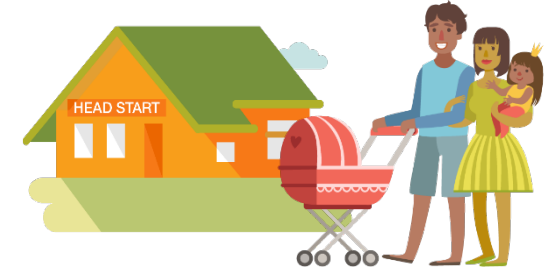
- *What questions do you have about the standard you reviewed?*
- *What capacity do you have to meet the program standard?*
- *What supports would you need to successfully implement program standard?*

Record your responses on chart paper, and be prepared to share out with the whole group





STUDENT SUCCESS ACT



Wrap-Up

What is one thing from today's session that you will bring back to share with your colleagues?

What have we not discussed today that you think is important for the Early Learning Division to know?