



Free webinar



Using Assessments To Improve Transitions to Kindergarten

Wednesday, November 19, 2014, 12:00–1:30 pm PST

The transition from preschool or other early learning settings into kindergarten marks an important event in the lives of more than 3.5 million children and their families each year. This REL Northwest webinar will explore one component of successful transitions: kindergarten entry assessments (KEAs).

Nationally known experts will discuss how to integrate KEAs into a comprehensive assessment system and how to use the data to inform teaching practices. State departments of education presenters will also highlight practical strategies they are using to assess a child's school readiness and adjust instruction to help bridge any gaps.

Presenters

- Jacqueline Jones, President and CEO, Foundation for Child Development
- John Pruette, Executive Director, Office of Early Learning, North Carolina Department of Public Instruction
- Thomas Schultz, Senior Scientist, Center on Enhancing Early Learning Outcomes (CEELO); Director of Early Childhood Initiatives, Council of Chief State School Officers
- Jana Martella, Co-Project Director, CEELO; Education Development Center
- Fiona Helsel, Deputy Director and Early Childhood Education Lead, REL Northwest

Who should attend

This event is designed for early childhood education leads and staff in the following institutions:

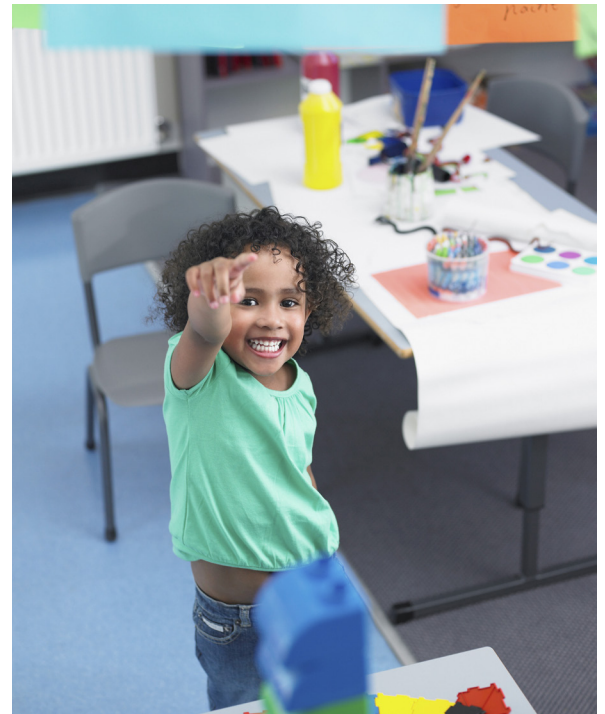
- State education agencies (e.g., early learning departments or offices in state departments of education), including those that are in the beginning stages of designing and/or implementing their KEA
- Local education agencies, particularly those in states with formalized requirements for preschool and kindergarten attendance
- Individual schools, particularly those that are currently implementing a KEA

To register

<http://relnw.educationnorthwest.org/events/using-assessments-improve-transitions-kindergarten>

For more information

Contact Fiona Helsel at Fiona.Helsel@educationnorthwest.org.



This event, funded by the Institute of Education Sciences, is sponsored by Regional Educational Laboratory (REL) Northwest and the Center on Enhancing Early Learning Outcomes

