



# Director's Update

Oregon Small Schools Association



OREGON  
DEPARTMENT OF  
EDUCATION

# ODE Education Priorities

---



**Academic Excellence**



**Belonging and Wellness**



**Reimagining Accountability**





# Priority #1

## Academic Excellence

### Working Definition:

Our scholars deserve to learn at high levels so they have the skills and knowledge to do their best work.

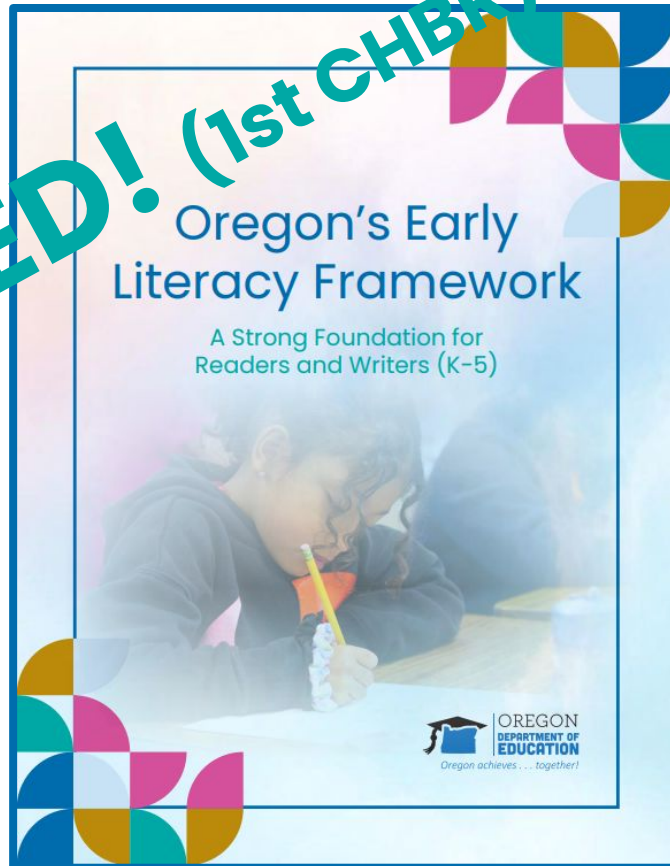


# Oregon's Early Literacy Framework (K-5)

Oregon's Early Literacy Framework emphasizes core instructional practices that benefit all students, with an intentional emphasis on how those practices can be leveraged to best serve students who have been historically marginalized by education systems, including multilingual learners and students experiencing disabilities.

## THE CORE PURPOSE OF THIS FRAMEWORK IS TO:

1. Build statewide coherence, clarity, and common ground
2. Fuel action and improvement
3. Provide a practical road map for schools and districts to support reading for a literacy lift
4. Serve as a shared north star for educators and community
5. Align with Governor's vision for improving student literacy outcomes





# Finding synergy: Bilingual Enrichment Program promotes summer learning in Hillsboro

Nick LaMora Jul 31, 2024 Updated Aug 5, 2024





# Priority #3

## Reimagining Accountability



### Working Definition:

As we demand higher outcomes for students there must be **shared** accountability.

# Setting our North Star - Accountability

**Builds on existing metrics by adding:**

- K-2 Regular Attendance
- 8th Grade Mathematics
- Local Option Metric

**Maintaining SIA's 5 Common Metrics:**

- *Regular Attendance*
- *3rd Grade Reading*
- *Ninth Grade On Track*
- *On Time Graduation*
- *Five Year Completion Rate*



# Support and Intervention

---

## **Systems-Level Continuous Improvement -**

For ODE and school districts, continuous improvement means using an ongoing, cyclical process to track and monitor outcomes over time. This includes:

- Differentiating supports
- Required coaching
- Directing up to 25% of State School Fund (SSF) and Student Investment Account (SIA) dollars if necessary





# Shared Values in Accountability

## SHARED VALUES



Meaningful  
Relationships

• • • • •



Reciprocal & Shared  
Accountability  
Amongst All Partners

• • • • •



Systems-Level  
Continuous  
Improvement

• • • • •



Multiple Measures  
That Matter

• • • • •



Sufficient and  
Responsive  
Resources and  
Capacity

• • • • •

# **PRIORITIES**

**FOR STUDENT SUCCESS**

**High-Quality  
Learning  
Experiences  
for All  
Students**

**Strong,  
Aligned,  
Coherent and  
Focused  
Education  
Systems**

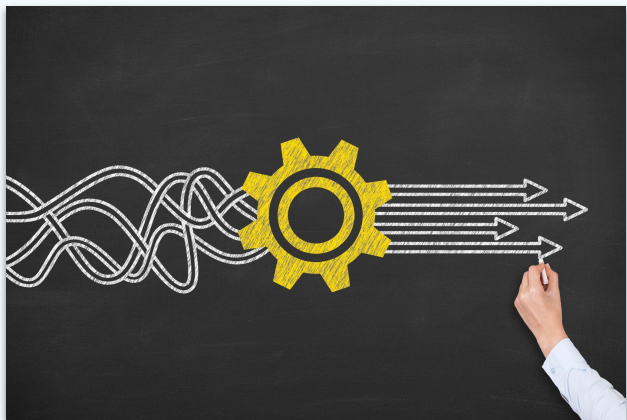
**Engaged  
Partners and  
Communities**

**Safe and  
Inclusive  
Schools**

**Committed  
and  
Supported  
Staff**

# Phase I: Fall 2026

## - Streamlined Narrative Reporting



Oregon Department of Education

**By Fall 2026, ODE staff will:**

- 1. Reduce district reporting requirements**
- 2. Align District Narrative reporting to five priority areas:**
  - High-Quality Learning Experiences
  - Aligned & Focused Systems
  - Engaged Partners & Communities
  - Safe & Inclusive Schools
  - Committed & Supported Staff
- 3. Prepare to holistically review district reporting submissions**



# Priority #2

## Belonging & Wellness



### Working Definition:

Creating the conditions so students are **ready to learn**, including their sense of wellness and belonging; affirming their identity, ability to honor and respect others.





# Federal Updates

