

All Day Kindergarten at a High Poverty School

Rosland Elementary

Teri Newcomb, Classroom Teacher

Rochelle Williams, Principal



ALL DAY KINDERGARTEN AT ROSLAND ELEMENRTARY

History

Number of Schools

1 in 2003-2004, to 6 in 2008-2009, to 16 in 2013-2014

Number of Classrooms

2 in 2003-2004, to 10 in 2008-2009, 39 (24 Title and 15 KAE) in 2013-2014

Number of Students

40 in 2003-2004 to 180 in 2008-2009, 865 in 2013-2014

Rosland

Opened in 2010

160 Students

89% Free and Reduced Lunch

7-8 classrooms

.6 Title 1 teacher

2011-2012 Level 2 "Focus School"

2012-13 Level 4

Why

Early intervention - Reduction in remediation in upper grades

Closes achievement gap - Levels playing field

More time to develop academic, social and emotional skills

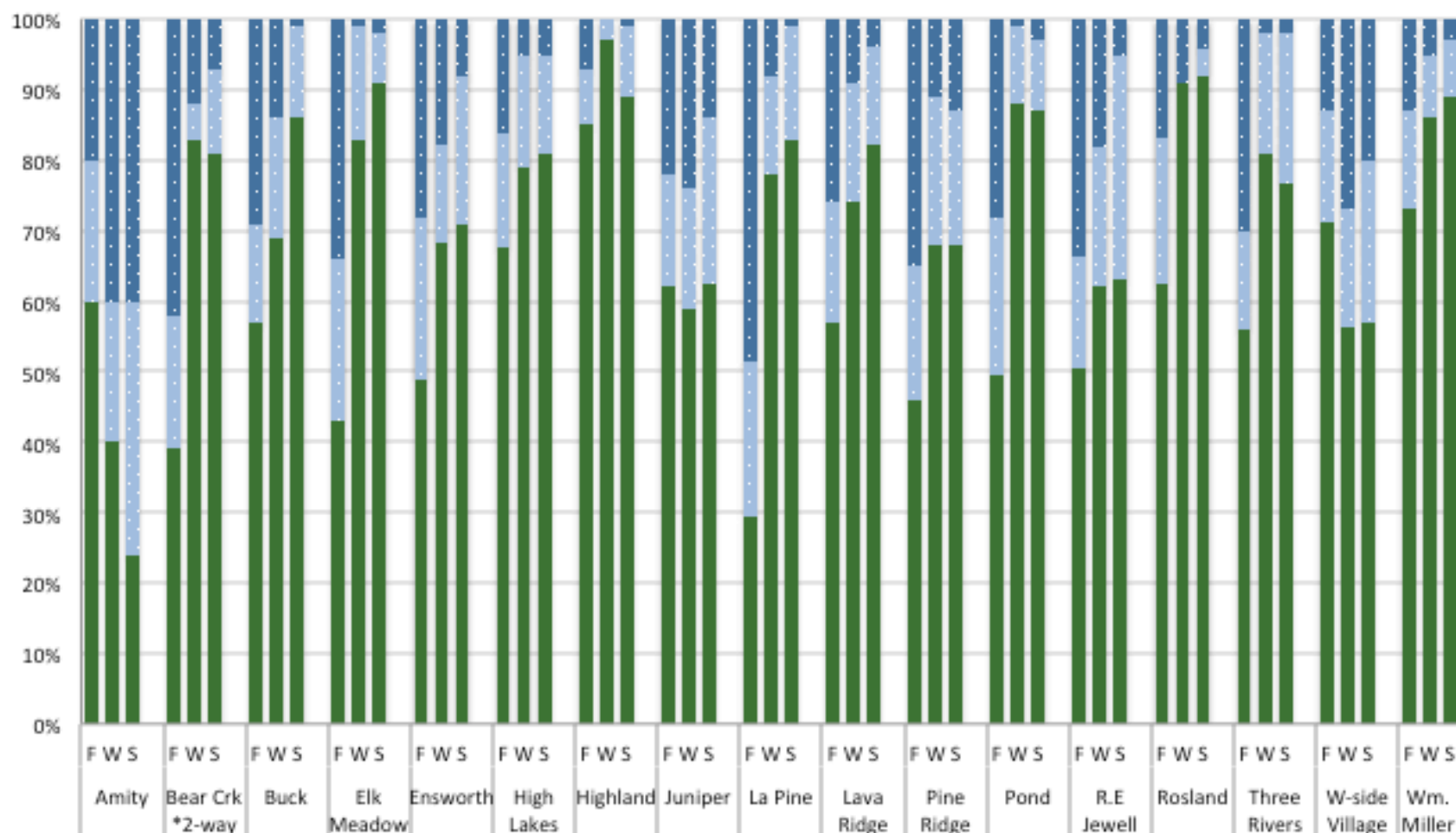
More time to explore topics in depth - increases opportunities to learn

Reduces transition time to class time - better learning pace

Increases attendance

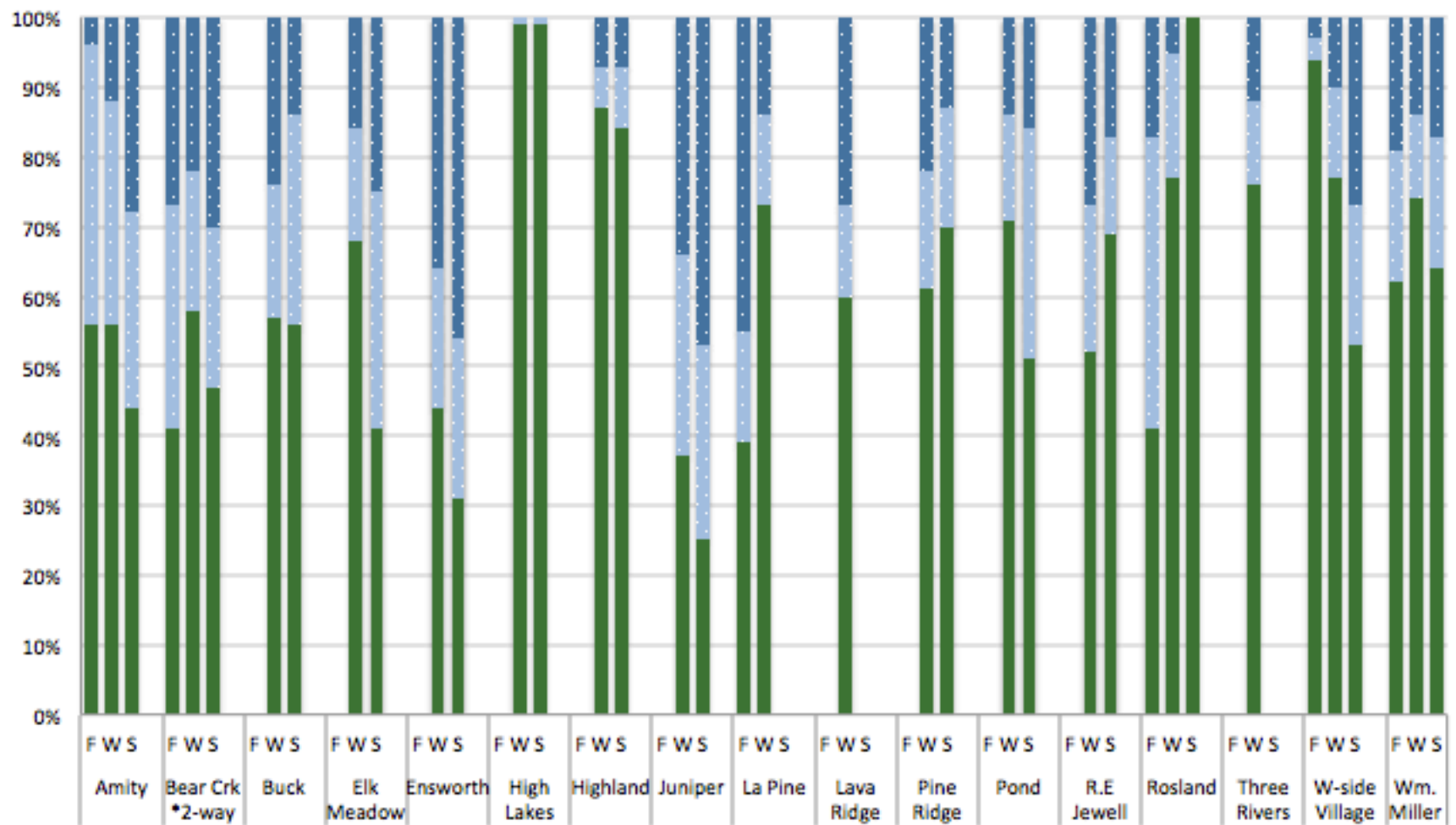
Kindergarten DIBELS Composites 2012-13

■ Core ■ Strategic ■ Intensive



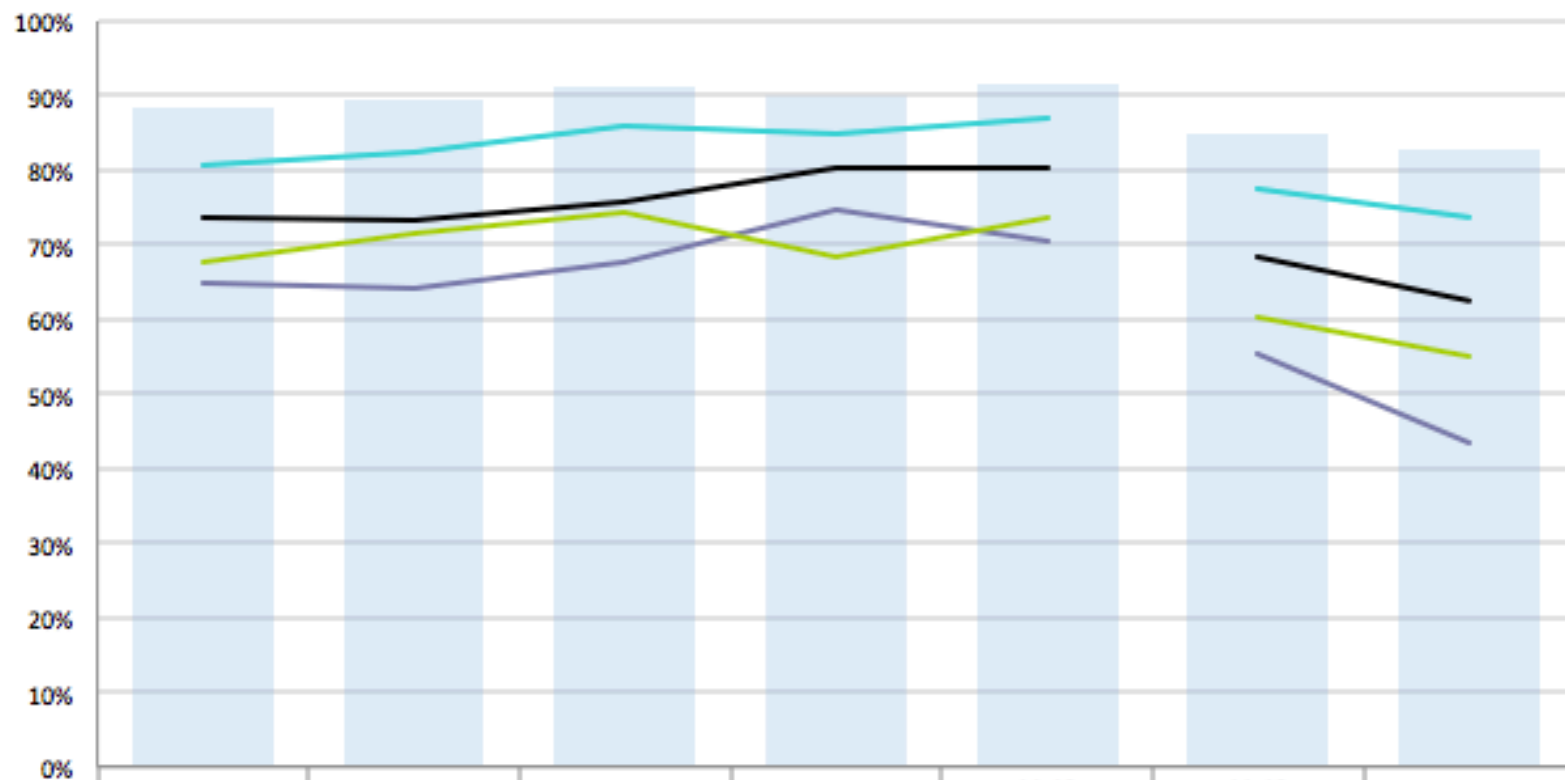
Kindergarten easyCBM Math 2012-13

Low Risk Some Risk High



Bend-La Pine Schools - Elementary

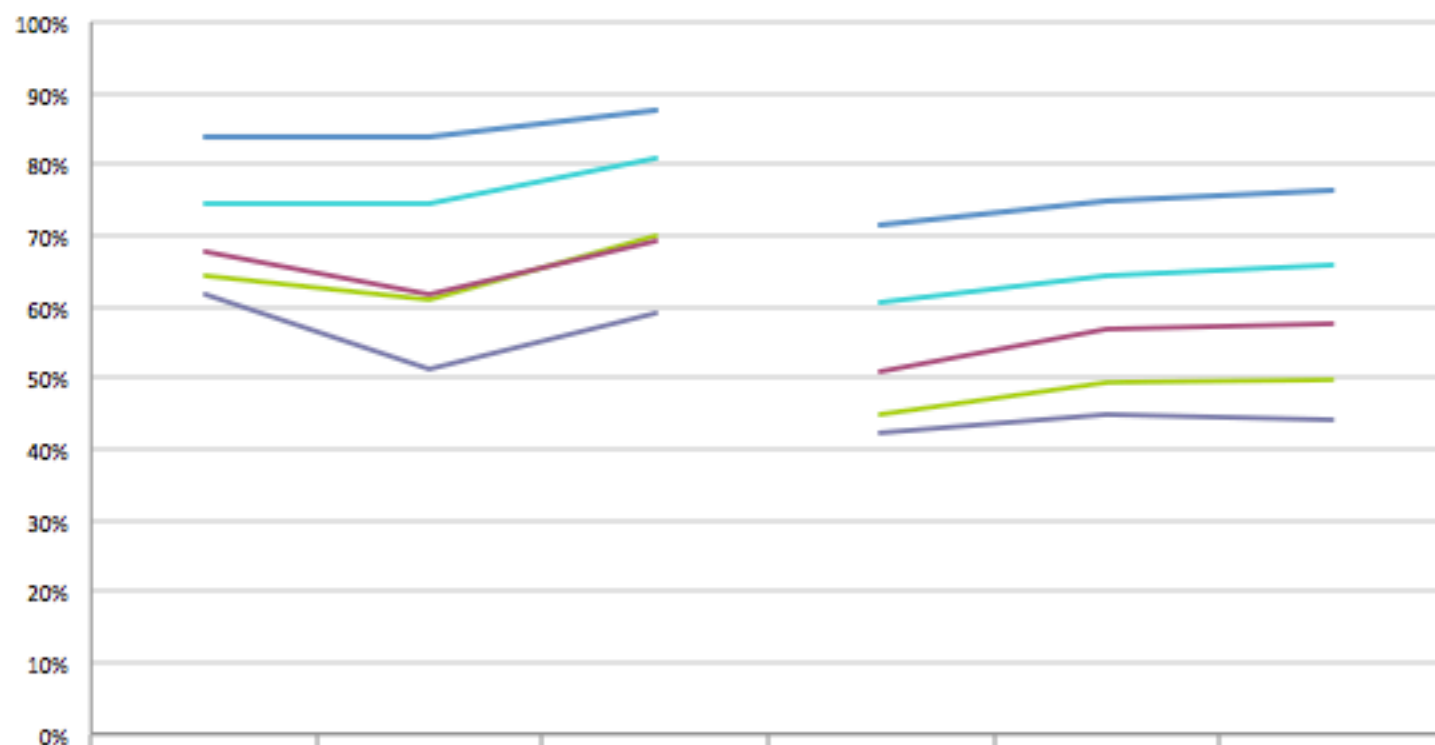
OAKS ELA: Percent Meets/Exceeds (AYP/Detail Sheet)



	07-08	08-09	09-10	10-11	11-12 (10-11 Standards)	11-12 (New standards)	12-13
All Students	88.4%	89.3%	91.1%	90.0%	91.6%	84.7%	82.7%
ELL	64.7%	64.1%	67.8%	74.8%	70.6%	55.3%	43.3%
SPED	67.8%	71.5%	74.4%	68.5%	73.8%	60.5%	54.9%
Hispanic	73.8%	73.1%	75.9%	80.3%	80.4%	68.5%	62.5%
Econ Dis	80.8%	82.5%	86.0%	84.9%	87.0%	77.5%	73.7%

Bend-La Pine Schools - Elementary

OAKS Math: Percent Meets/Exceeds (AYP/Detail Sheet)



	07-08	08-09	09-10	10-11	11-12	12-13
All Students	84.0%	83.9%	87.7%	71.5%	74.7%	76.2%
ELL	61.6%	51.4%	59.3%	42.3%	44.9%	44.2%
SPED	64.4%	61.2%	69.8%	44.7%	49.3%	49.8%
Hispanic	67.9%	61.6%	69.1%	50.9%	56.7%	57.5%
Econ Dis	74.5%	74.5%	80.8%	60.6%	64.3%	66.0%

Who gets this experience?

- All Title 1 Schools have All Day K options
- 5 - Highest Poverty Schools have only All Day K
- Targeted Title Schools assess students and offer All Day to highest need students and Tuition based for others
- Non Title Schools have Tuition based options

What to prepare for?

Building Space

Jump Up day with PreSchools

August Assessment Day

Staggered Start

Being sensitive to parents' needs

Flexible scheduling allowing for developmental needs

Balancing social skills and academics

Curriculum- Is it rich enough?

Professional Development

6

Daily Schedule

- | | |
|--|--------------------------|
| • Monday, Tuesday, Thursday, & Friday | Wednesday |
| • 8:45 Breakfast | 8:45 Breakfast |
| • 9:05 Walk to Read | 9:05 Number Corner |
| • 9:45 Number Corner | 9:30 Whole Group Reading |
| • 10:15 Recess | 10:15 Recess |
| • 10:30 Whole Group Reading | 10:30 Whole Group Rdg. |
| • 11:00 Writing Workshop | 11:00 Math |
| • 11:30 Lunch | 11:30 Lunch |
| • 11:50 Recess | 11:50 Recess |
| • 12:15 Rest | 12:15 Community Time |
| • 12:30 Math | 12:30 Library |
| • 1:15 Core Reading /Safe & Caring Schools | 1:00 Reading |
| • 1:30 Specials | 1:15 Reading |
| • 2:00 Reading/Handwriting | 1:40 Snack & Content |
| • 2:30 Recess | 2:00 Dismissal |
| • 2:45 Snack & Content | |
| • 3:30 Dismissal | |

Future Goals

Pre K options & Partnerships
Improved Transitions

- 8 Looking into the transition to first grade skills
- Summer Programs to combat summer regression
- Improved Kindergarten Attendance