



Home of the Huskies

Contact Us

65912 High School Loop
Moro, OR 97039

541-565-3500
www.sherman.k12.or.us

Apply Now!

Please visit the school
website for an application
packet.



Sherman County School Employment Opportunities

WORKING TOGETHER TO PUT
STUDENT SUCCESS FIRST!

About Us

TESTIMONIALS ~ *A Dedicated Team*

"With four decades of experience across five school districts, I can - without a near rival - rate SCS as the best experience of my career. The collaborative spirit and efforts put forth by the Administration, the School Board, the full range of classified and certified staff in promotion of building life-long learning and civic engagement in the student body and larger community has made SCS the crowning gemstone of my career for which I will always be grateful." ~Tim Zacharias, Language Arts and Media Instructor

"SCSD is a district that has great collaboration among teachers, across grade-levels and disciplines, to meet student needs!" ~Carisa Huva-Bellamy, Former 6th Grade Teacher & Current Special Education Services

"Sherman County School is a fantastic place to work. Administration, teachers and staff are welcoming and they recognize the need for school counselors and the work they do. I have felt very supported and appreciated here, and have been impressed with the school's ability to stay positive and work as a team during these challenging times. I would strongly recommend applying to Sherman County School." ~Sami Peterson, School Counselor

OUR VISION ~ *Sherman Strong*

1. We believe that strong student/staff relationships foster improvements in academics, citizenship and attitude.
2. We believe that positive community support, involvement and generosity are critical to student success.
3. We believe that the employees of the Sherman County School District have a united commitment in pursuit of the vision for academic and citizenship growth by all students.
4. We believe in providing a safe environment where the physical, social, emotional and academic needs of the students and staff can be met.
5. We believe that well-maintained facilities are an essential factor in providing a safe and accessible education to all.
6. We believe that our community and students deserve clean, safe, secure, well-equipped and inviting facilities of which to be proud.

OUR MISSION ~ *Student Centered*

Sherman County Schools, in partnership with its community citizens, will provide all students with an education which produces responsible and informed citizens, able to adjust, grow, and make positive contributions to a rapidly changing world.



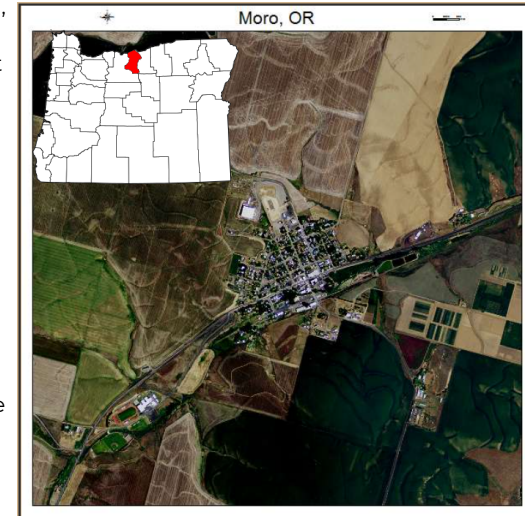
SALARY & BENEFITS ~ *Robust Compensation*

Competitive salary dependent upon education, endorsements, and experience. Plus a generous benefit package. Co-curricular stipend opportunities are available if interested.

Meet Our Community

SHERMAN COUNTY ~ *A Hidden Gem*

Located in Moro, the school is a modern, comprehensive K-12 facility in a class of its own that opened in the fall of 2016. It is a clean and well-maintained building with a unique safety plan in place to protect students and staff. A beautiful 7,000 square foot public/school library adjoins the school campus. Technology is well integrated into the curriculum. Chromebooks, high speed internet, interactive video, online classes and video-on-demand services are all available to support and augment instructional programs. The School enjoys an all-weather track facility, three spacious gymnasiums, beautiful baseball field, and new tennis courts.



Sherman County School is one of Oregon's best kept secrets. It is the heart and soul of the community with strong family values. Community support, staff dedication, and an incredible student body (approx. 250) are unparalleled. The school district is fortunate to have a solid local funding base comprised of SIP funds, an Athletic Foundation, Education Foundation, and a robust scholarship program. Student support is enhanced with a comprehensive counseling department that includes a K-12 Counselor, Qualified Mental Health Professional, College and Career Counselor and a Student Success Coach.

Sherman County is a rural agricultural community with the added economic development provided by the Strategic Investment Program Funds (wind energy). It is located in north central Oregon between the John Day River on the east and the Deschutes River on the west. The Columbia River forms the boundary to the north. Much of the southern boundary is defined by the canyons of Buck Hollow creek, a tributary of the Deschutes. Sherman County enjoys four distinct seasons. Summers are warm, dry and clear. Winters are relatively mild; heavy snowfall is uncommon. The county is relatively small, with only 831 square miles, it is approximately 20 miles wide and 42 miles long, elevations range from 185 feet along the Columbia River to 3,600 feet on the plateau in the south. There are six small towns: Biggs Junction, Rufus, Wasco, Moro, Grass Valley and Kent within the county line that house approximately 1800 residents. Sherman County residents enjoy a variety of outdoor activities including windsurfing, boating, hiking, hunting, fishing and camping.

